

TorrentExam

Input your exam code ...

The passing rate of our valid exam braindumps for most certifications is high up to 99%. A small PDF dumps free is ready to download for new customers to tell if our exam dumps are suitable for their real exam.

All Products

Contact now

Why Choose Us



QUALITY AND VALUE

RealExamFree Practice Exams are written to the highest standards of technical accuracy, using only certified subject matter experts and published authors for development - no all dumps.



TESTED AND APPROVED

We are committed to the process of vendor and third party approvals. We believe professionals and executives alike deserve the confidence of quality coverage these authorizations provide.



EASY TO PASS

If you prepare for the exams using our RealExamFree testing engine, It is easy to succeed for all certifications in the first attempt. You don't have to deal with all dumps or any free torrent / rapidshare all stuff.



TRY BEFORE BUY

RealExamFree offers free demo of each product. You can check out the interface, question quality and usability of our practice exams before you decide to buy.

Customer Reviews



I wasted a lot of money and failed twice. Thanks to HPE0-J78 exam collection I pass now.

Noel



realexamfree is a reliable company. I pass exam at first shot. Many thanks

Julie



Pass BIMF.EN successfully. Really good dumps. It saves me a lot of time. Wonderful!

Ahern



online test engine is very useful for me, because i could practice the C-TERP10-67 question dumps in my phone when i was waiting or on the bus even without internet, i could make the most of my time. Last week, i passed the C-TERP10-67. so i want to share the realexamfree with you guys. hope you will get a good result in test.

Carl

<http://www.torrentexam.com>

Best Exam Bootcamp & Excellent VCE Torrent & Satisfying Dumps Torrent

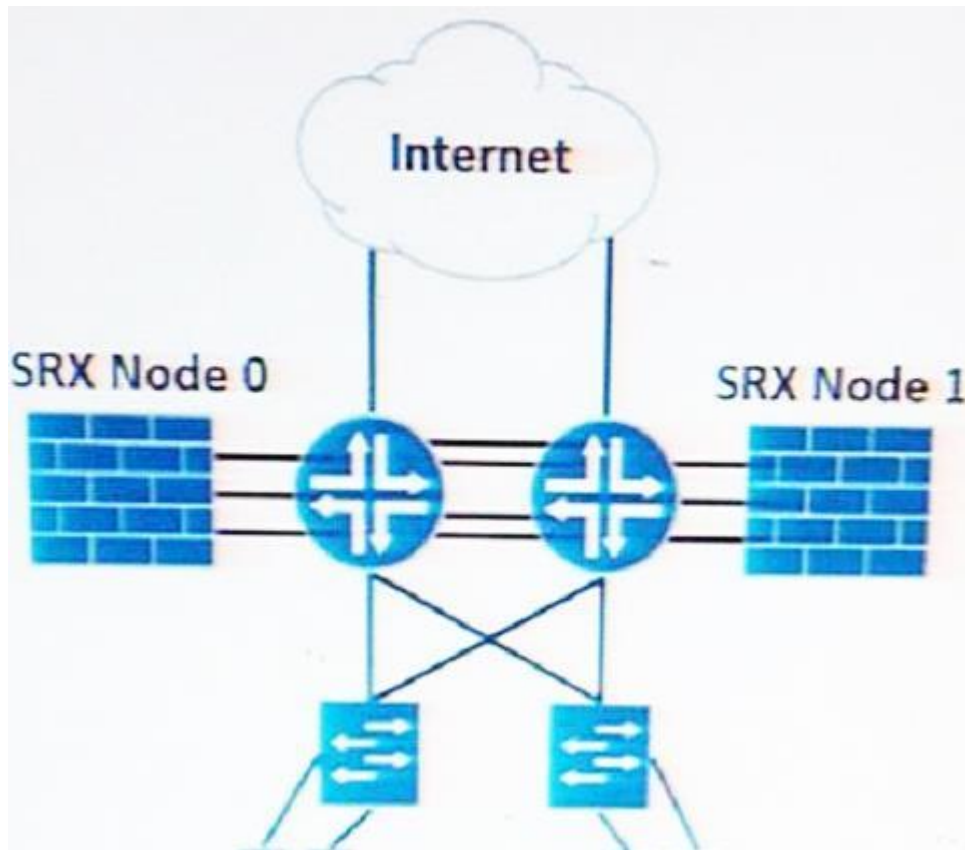
Exam : **JN0-1330**

Title : Security Design, Specialist
(JNCDS-SEC)

Vendor : Juniper

Version : DEMO

NO.1 Click the Exhibit button.



The data center shown in the exhibit is running an active/active SRX Series chassis cluster and an active/active network infrastructure. Customer A needs to communicate with customer D, and customer B

needs to communicate with customer C.

In this scenario, which two steps avoid Z-mode traffic? (Choose two.)

- A. Associate customer A and customer D network segments in different redundancy groups.
- B. Associate customer A and customer D network segments in the same redundancy groups.
- C. Associate customer B and customer C network segments in the same redundancy groups.
- D. Associate customer B and customer C network segments in different redundancy groups.

Answer: B,C

NO.2 Your client modifies an event script and needs to update 100 SRX Series devices with this new script.

They want to use the refresh-from parameter to refresh the script from a centralized location.

In this scenario, which three protocols would you use to accomplish this task? (Choose three.)

- A. HTTP
- B. SCP
- C. TFTP
- D. FTP
- E. CIFS

Answer: A,B,D

NO.3 Your customer is planning to secure a data center with web servers reachable through two ISP connections terminating on each node of an active/passive SRX Series chassis cluster. ISP-1 is the preferred connection because it provides higher bandwidth than ISP-2.

Which two must you include in your design proposal to meet this requirement (Choose two)

- A. Use conditional BGP advertisements and use Interface monitoring for both ISP Interfaces.
- B. Use static routing and use interface monitoring for both ISP interfaces.
- C. Ensure that both ISP interfaces are in the same zone and use interface monitoring.
- D. Ensure that both the ISP interfaces are in different zones and use interface monitoring.

Answer: A,D

NO.4 You are asked to implement port-based authentication on your access switches. Security and ease of access are the two primary requirements. Which authentication solution satisfies these requirements?

- A. MAC RADIUS
- B. network access control
- C. firewall authentication
- D. IPsec tunnel

Answer: A

NO.5 As part of your branch office security design, you are asked to include the necessary features to address these requirements;

- stop spam and phishing,
- stop viruses, Trojans, and spyware,
- control website access, and -control content

Which security feature set meets these requirements?

- A. unified threat management
- B. intrusion prevention system
- C. stateless firewall filters
- D. services offloading

Answer: A