

# TorrentExam

Input your exam code ...

The passing rate of our valid exam braindumps for most certifications is high up to 99%. A small PDF dumps free is ready to download for new customers to tell if our exam dumps are suitable for their real exam.

All Products

Contact now

## Why Choose Us



### QUALITY AND VALUE

RealExamFree Practice Exams are written to the highest standards of technical accuracy, using only certified subject matter experts and published authors for development - no all dumps.



### TESTED AND APPROVED

We are committed to the process of vendor and third party approvals. We believe professionals and executives alike deserve the confidence of quality coverage these authorizations provide.



### EASY TO PASS

If you prepare for the exams using our RealExamFree testing engine, It is easy to succeed for all certifications in the first attempt. You don't have to deal with all dumps or any free torrent / rapidshare all stuff.



### TRY BEFORE BUY

RealExamFree offers free demo of each product. You can check out the interface, question quality and usability of our practice exams before you decide to buy.

## Customer Reviews



I wasted a lot of money and failed twice. Thanks to HPE0-J78 exam collection I pass now.

Noel



realexamfree is a reliable company. I pass exam at first shot. Many thanks

Julie



Pass BIMF.EN successfully. Really good dumps. It saves me a lot of time. Wonderful!

Ahern



online test engine is very useful for me, because i could practice the C-TERP10-67 question dumps in my phone when i was waiting or on the bus even without internet, i could make the most of my time. Last week, i passed the C-TERP10-67. so i want to share the realexamfree with you guys. hope you will get a good result in test.

Carl

<http://www.torrentexam.com>

Best Exam Bootcamp & Excellent VCE Torrent & Satisfying Dumps Torrent

**Exam** : **70-247**

**Title** : **Configuring and Deploying a Private Cloud with System Center 2012**

**Vendor** : **Microsoft**

**Version** : **DEMO**

NO.1 You have a deployment of System Center 2012 R2 Virtual Machine Manager (VMM). You need to configure a profile that installs the Web Server (IIS) server role during the deployment of a virtual machine.

Which profile should you configure?

- A. Guest OS
- B. Advanced Operator
- C. Capability
- D. Physical Computer

**Answer:** A

NO.2 Your company has a datacenter in Los Angeles.

The datacenter contains the following servers:

-A server named App1 that has System Center 2012 App Controller installed.

-A server named Portal1 that has the Windows Azure Subscription Management Portal installed.

-A server named Server1 that has Active Directory Certificate Services (AD CS) installed.

You need to configure a connection from App1 to a Windows Azure subscription. The solution must ensure that you

can manage the subscription from Portal1. You issue a certificate from Server1 and then export it.

What should you do

next? (Each correct answer presents part of the solution. Choose two.)

- A. From App1, import the certificate.
- B. From Portal1, import the certificate.
- C. Request a new certificate to be used on App1.
- D. Request a new certificate to be used on Portal1.

**Answer:** A, B

Explanation:

<http://technet.microsoft.com/en-us/library/hh221344.aspx>

<http://www.thomasmaurer.ch/2012/06/system-center-2012-app-controller-connecting-to-windows-azure/>

[http://kevingreeneitblog.blogspot.com/2011/11/cloud-management-with-system-center\\_3126.html](http://kevingreeneitblog.blogspot.com/2011/11/cloud-management-with-system-center_3126.html)

NO.3 You are the datacenter administrator for a company named Contoso, Ltd.

The network contains a server that has System Center 2012 Virtual Machine Manager (VMM) installed.

You create four private clouds.

Developers at Contoso have two Windows Azure subscriptions.

Contoso creates a partnership with another company named A.Datum.

The A.Datum network contains a System Center 2012 Virtual Machine Manager (VMM) infrastructure that contains three clouds.

Developers at A.Datum have two Windows Azure subscriptions.

You deploy System Center 2012 App Controller at A.Datum.

You plan to manage the clouds and the Windows Azure subscriptions for both companies from the App Controller portal.

You need to identify the minimum number of subscriptions and the minimum number connections required for the planned management.

How many connections and subscriptions should you identify?

- A. Two connections and four subscriptions

- B. Two connections and two subscriptions
- C. Four connections and four subscriptions
- D. Eight connections and four subscriptions
- E. Four connections and two subscriptions

**Answer: A**

Explanation:

"Contoso has four clouds."

Connecting to a private cloud means establishing a connection to a VMM 2012 Management Server. However, you can

also add a Windows Azure subscription to App Controller. Before anyone can use App Controller, an administrator

must configure it to communicate with VMM for private clouds, or Windows Azure for public cloud services.

Connecting App Controller to VMM is straightforward.

Connecting (or subscribing) App Controller to an Azure subscription requires a little more work.

One of the coolest features of App Controller is its support for multiple connections and subscriptions. If for business

reasons you implement different VMM deployments, you can connect App Controller to each deployment. Similarly, if

you have multiple subscriptions to the Microsoft Azure service, you can add them to App Controller.

References:

<http://blogs.technet.com/b/server-cloud/archive/2011/10/28/app-controller-enabling-application-self-service.aspx>

<http://www.windowsitpro.com/article/system-center/microsoft-system-center-app-controller-2012-142925>

<http://technet.microsoft.com/en-us/library/gg696038>

#### NO.4 DRAG DROP

After the planned implementation of System Center 2012 R2, you need to configure the integration with Windows Azure.

What should you do? To answer, drag the appropriate actions to the correct components. Each action may be used

once, more than once, or not at all. You may need to drag the split bar between panes or scroll to view content.

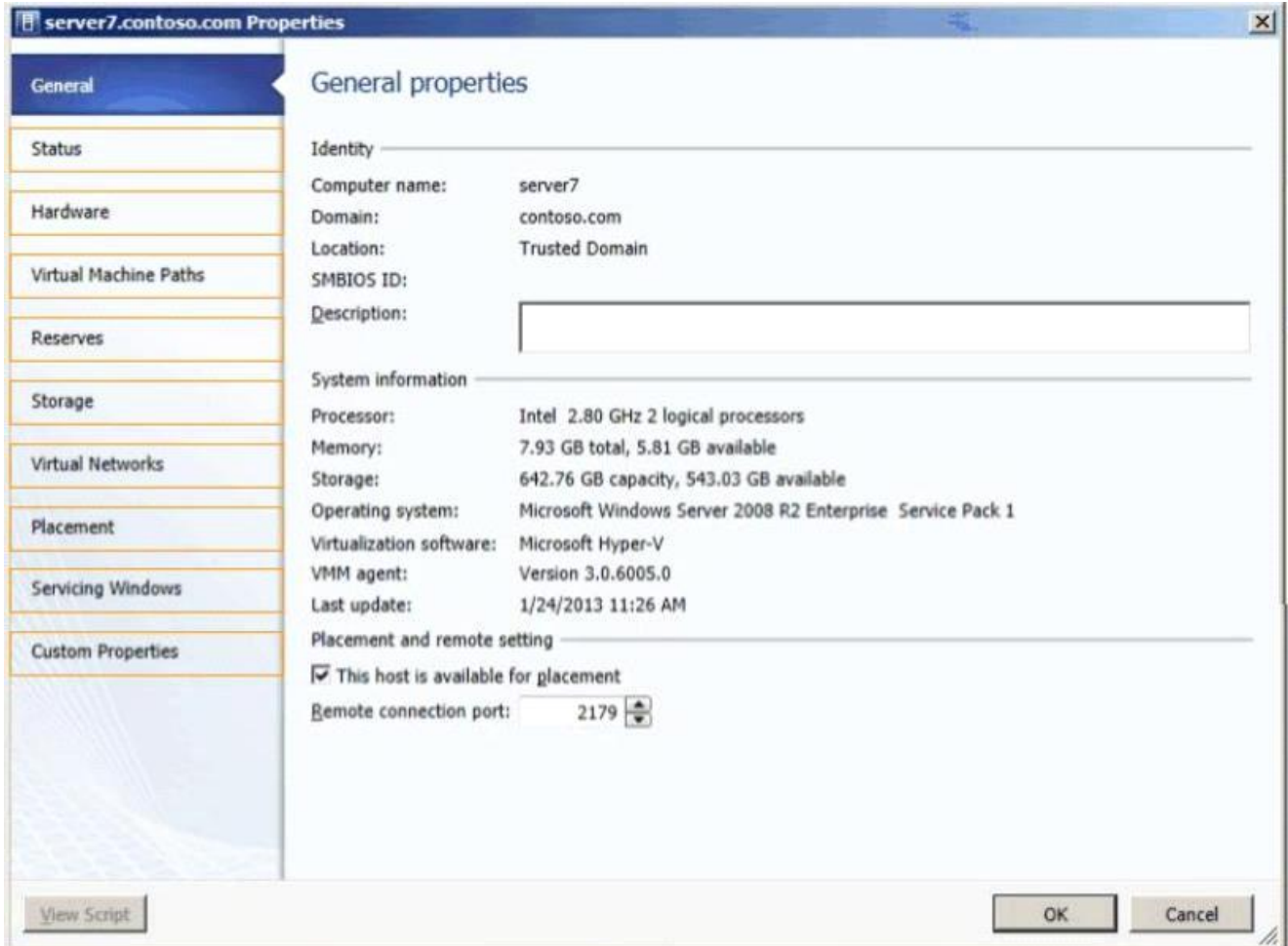
The screenshot shows a configuration interface with two main panes. The left pane, titled "Actions", contains a list of four actions: "Add a subscription.", "Add a service template.", "Configure a virtual machine path.", and "Configure a stored virtual machine path.". The right pane, titled "Answer Area", contains two components: "App Controller portal:" and "Virtual Machine Manager console:". Each component has a corresponding "Action" button next to it.

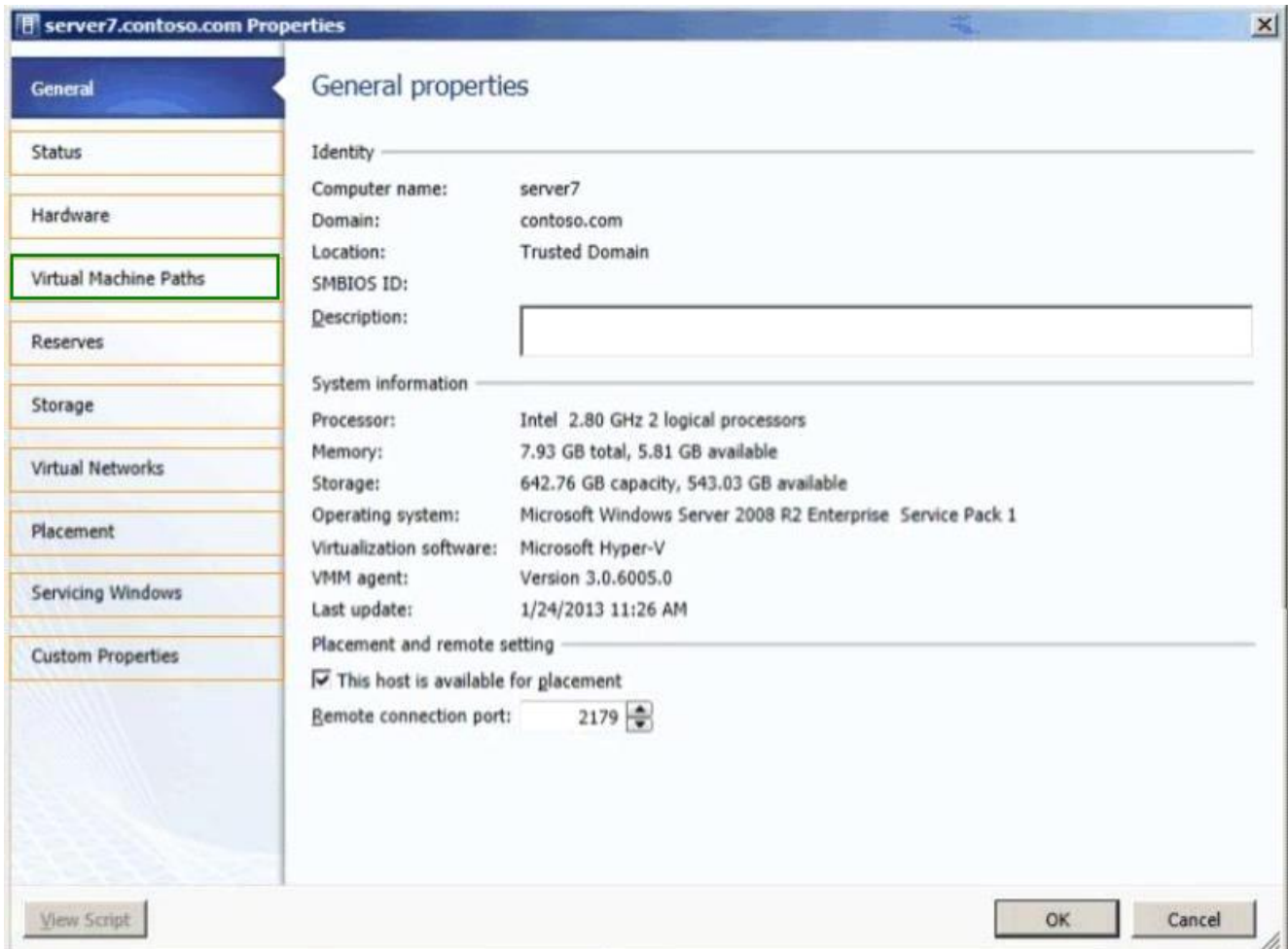
**Answer:**

App Controller portal: Virtual Machine Manager console: **NO.5 HOTSPOT**

You need to configure the Hyper-V hosts to meet the cloud requirements.

From which node should you perform the configuration? (To answer, select the appropriate node in the answer area.)

**Answer:**



Explanation:

"Uses SAN copy to provision the virtual machines"

"Stores all virtual machines on the SAN only"

Reference:

<http://technet.microsoft.com/en-us/library/gg610643.aspx>

NO.6 You have a System Center 2012 Virtual Machine Manager (VMM) infrastructure that contains five virtualization hosts.

You add new storage to the network. You need to discover the storage from the VMM Administrator Console.

What should you create first?

- A. a Hardware Profile
- B. a classification
- C. a Run As Account
- D. a Guest as Profile

**Answer:** C

Explanation:

<http://technet.microsoft.com/en-us/library/gg610563>

NO.7 DRAG DROP

Your network contains two servers named Server1 and Server2. Server1 hosts a System Center 2012 Service Manager management server. Server2 hosts a Service Manager data warehouse management server.

The System Center infrastructure contains test data that was entered during a testing phase.

You plan to deploy the System Center servers to the production network.

You need to remove the test data from the data warehouse before you deploy the server to the production network.

You remove the test data from the Service Manager database.

What order should you perform the listed actions? (To answer, move all the actions from the list of actions to the

answer area and arrange them in the correct order.)

Actions	Answer area
Delete the data warehouse databases.	
Uninstall the data warehouse management server.	
Stop the data warehouse jobs.	
Install the data warehouse management server.	
Register the data warehouse management server.	
Unregister the data warehouse management server.	

**Answer:**

Actions	Answer area
	Stop the data warehouse jobs.
	Unregister the data warehouse management server.
	Uninstall the data warehouse management server.
	Delete the data warehouse databases.
	Install the data warehouse management server.
	Register the data warehouse management server.

Explanation:

Reference:

<http://social.technet.microsoft.com/Forums/en/dwreportingdashboards/thread/9cedc66c-b7aa-478e-8548-7de0a9c1dfab>

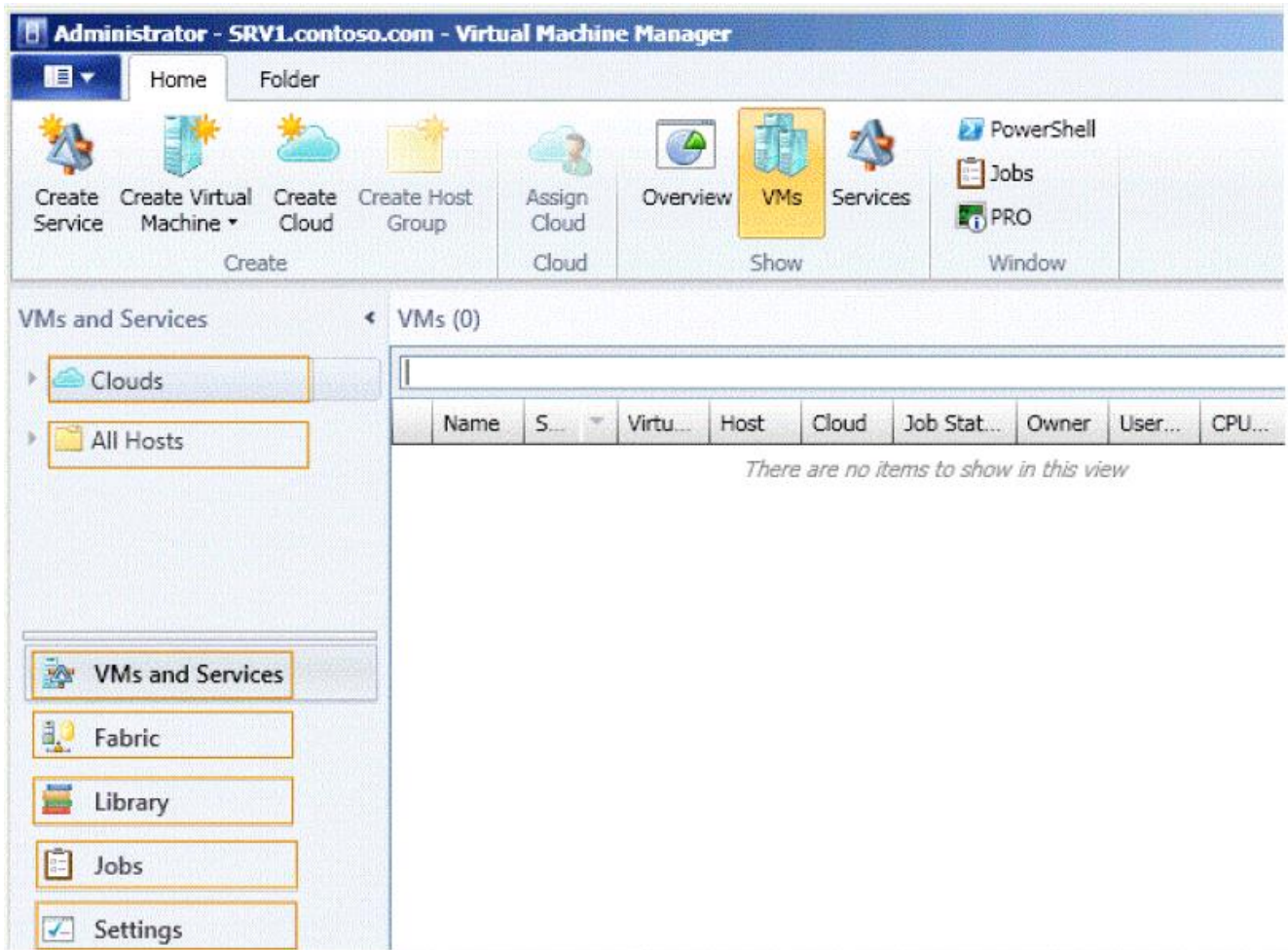
**NO.8 HOTSPOT**

Your network contains a server named Server1 that has System Center 2012 Virtual Machine Manager (VMM) installed.

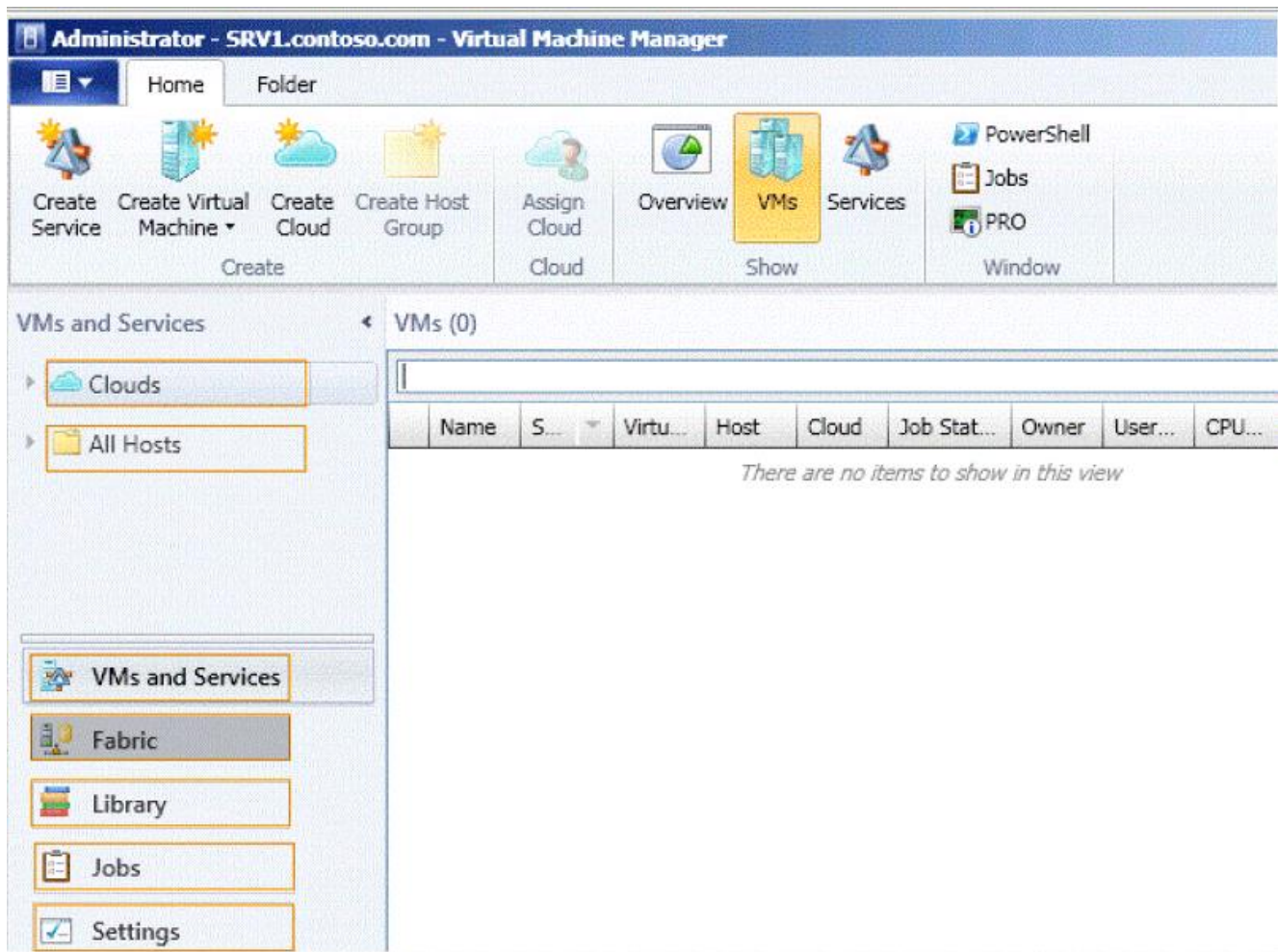
You need to add a Windows Server Update Services (WSUS) server to the VMM infrastructure.

What should you configure from the VMM Administrator Console? To answer, select the appropriate option in the

answer area.



**Answer:**



NO.9 You need to implement the Service Manager Self-Service Portal.

What should you do?

- A. Install the web content server on SCSM01. Install the SharePoint Server Web Parts on APP01.
- B. Install the web content server and the SharePoint Server Web Parts on SCSM01.
- C. Install the web content server on WEB01. Install the SharePoint Server Web Parts on WFE01.
- D. Install the web content server and the SharePoint Server Web Parts on WEB01.

**Answer:** C

NO.10 Your network contains an Active Directory forest named contoso.com. You install System Center 2012 Virtual Machine

Manager (VMM) on a server named Server1. Users report that they fail to log on to the Virtual Machine Manager Self-

Service Portal (VMMSSP). You need to ensure that users call log on to the VMMSSP.

What should you do first?

- A. From the Virtual Machine Manager command shell, run the New-SCUserRole cmdlet and the Set SCUserRole cmdlet.
- B. From Internet Information Services (IIS) Manager on Server1, modify the Authentication settings.
- C. From Authorization Manager, create a role definition and a role assignment.
- D. From the VMM Administrator Console, run the Create Run As Account Wizard

**Answer:** A

Explanation:

<http://technet.microsoft.com/en-us/library/hh801722.aspx>

The New-SCUserRole cmdlet creates a user role for a group of System Center Virtual Machine Manager (VMM) users.

You can create the following user roles: Delegated

Administrator, Read-Only Administrator, and Self-Service User. Only one Administrator role exists; you cannot create

another Administrator role or delete the existing one. If you are a member of a Delegated Administrator user role, you

can create a user role. However, the scope of the new user role must be a subset of the scope of its parent user role.

After you create a user role, you can use the Set-SCUserRole cmdlet to rename the user role, to add or remove

members, and to add or modify the scope of objects that members of the role can manage. For a self-service user

role, you can specify which actions members of a self-service user role can take on their virtual machines, and you can

define a quota that limits the number of virtual machines self-service users can create. Although you cannot create or

remove the Administrator role or limit its scope, you can use Set-SCUserRole to add or remove members to that role.

NO.11 Your company has a private cloud managed by a System Center 2012 Virtual Machine Manager (VMM) infrastructure.

You add a new SAN to the network, and then you run a storage discovery. You discover that the SAN resources are not

discovered by VMM. You verify that the VMM server can communicate with the SAN. You need to ensure that VMM

can discover the new SAN. What should you install?

A. a third-party iSCSI initiator

B. a Storage Management Initiative - Specification (SMI-S) provider.

C. the Multipath I/O (MPIO) feature

D. the Windows System Resource Manager (WSRM) feature.

**Answer:** B

Explanation:

<http://technet.microsoft.com/en-us/library/gg610600.aspx>

<http://technet.microsoft.com/en-us/library/gg610563.aspx>

NO.12 DRAG DROP

A company uses System Center 2012 R2 Virtual Machine Manager (VMM). You need to create and assign a self-service user role in VMM.

You have the following requirements:

- All role members must share ownership of all virtual machines (VMs) that any role member creates. Role members must be able to deploy VMs.

- Role members must NOT have authoring rights.

Which three actions should you perform in sequence? To answer, move the appropriate actions from the list of

actions to the answer area and arrange them in the correct order.

Create a role and assign the local group to the user role.

Create a local security group.

Create a role and assign the Local Administrator action to the role members.

Assign the Deploy (From template only) action to the role members.

Create a role and assign the security group to the user role.

Create an Active Directory Domain Services security group.

**Answer:**

Box 1: Create a local security group.

Box 2: Create a role and assign the security group to the user role.

Box 3:

Assign the Deploy (From template only) action to the role members.

**NO.13 DRAG DROP**

You have a System Center 2012 infrastructure that contains Service Manager, Virtual Machine Manager (VMM), and Orchestrator.

You configure the Service Manager connector for VMM and Orchstrator.

You need to enable self-service provisioning of virtual machines. The solution must use an approval process based on a workflow.

What order should you perform the listed actions? (To answer, move all the actions from the list of actions to the answer area and arrange them in the correct order.)

**Actions**

Build an Orchestrator runbook.

Register and deploy the Integration Pack for System Center Service Manager and the Integration Pack for System Center Virtual Machine Manager.

Configure the Service Manager connection settings and the Virtual Machine Manager connection settings.

Create a request offering.

Create a service request template.

**Answer Area**



**Answer:**

**Actions**

**Answer Area**

Register and deploy the Integration Pack for System Center Service Manager and the Integration Pack for System Center Virtual Machine Manager.

Configure the Service Manager connection settings and the Virtual Machine Manager connection settings.

Build an Orchestrator runbook.

Create a service request template.

Create a request offering.



NO.14 You need to recommend a design for the Operations Manager 2012 infrastructure. What should you include in the recommendation? (More than one answer choice may achieve the goal. Select the BEST answer.)

A.

\* In the Dublin data center, one local management group that contains two management servers.

\* In each of the data centers in Dublin, Bangalore, Dallas, and Sydney, one remote management group that contains two management servers.

B.

\* One management group that contains all of the management servers.

\* One resource pool that contains all of the management servers.

C.

\* In the Dublin data center, one connected management group that contains two management servers.

\* In each of the data centers in Bangalore, Dallas, and Sydney, one local management group that contains two

management servers.

D.

\* In the Dublin data center, one local management group that contains two management servers.

\* In each of the data centers in Bangalore, Dallas, and Sydney, one connected management group that contains two management servers.

**Answer:** D

NO.15 You need to configure connectors between the System Center 2012 components to meet the administrative requirements. Between which System Center 2012 components should you configure the connectors?

A. Operations Manager and Orchestrator

B. Service Manager and VMM

C. Operations Manager and Service Manager

D. Configuration Manager and Service Manager

**Answer:** C

NO.16 You are the virtualization administrator for an organization that manages private and public cloud resources.

The organization has a Windows Azure subscription.

You plan to move virtual machines to Windows Azure Infrastructure as a Service (IaaS) by using System Center 2012

R2 App Controller.

You need to create a virtual machine template that allows virtual machines to be moved from Hyper-V to Windows

Azure.

What should you do?

A. Create a new virtual machine that uses a .vhd file.

Run the Sysprep tool on the virtual machine.

B. Create a new Generation 2 virtual machine that uses a .vhdx file that is attached to a SCSI controller.

Run the Sysprep tool on the virtual machine.

C. Create a new virtual machine that uses a .vhdx file.

Run the Sysprep tool on the virtual machine.

D. Create a virtual machine by using a differencing disk.

Use the Clone a virtual machine option to create new virtual machines.

**Answer:** A

Explanation:

<http://blogs.msdn.com/b/how24/archive/2012/11/06/windows-azure-iaas-upload-a-custombuild-vmtemplate.aspx>

[http://blogs.technet.com/b/kevinremde/archive/2013/05/29/migrating-vms-from-hyper-v-to-windows-azure-20-key-](http://blogs.technet.com/b/kevinremde/archive/2013/05/29/migrating-vms-from-hyper-v-to-windows-azure-20-key-scenarios-with-windows-azure-infrastructure-services.aspx)

[scenarios-with-windows-azure-infrastructure-services.aspx](http://blogs.technet.com/b/kevinremde/archive/2013/05/29/migrating-vms-from-hyper-v-to-windows-azure-20-key-scenarios-with-windows-azure-infrastructure-services.aspx) Note: Azure v1.7 and below does not support VHDX files

<http://www.windowsazure.com/en-us/documentation/articles/virtual-machines-createupload-vhd-windows-server/>

NO.17 You need to recommend a solution for the planned deployment of the virtual machines for Customer1.

What should you include in the recommendation?

- A. Create a Guest OS profile. Configure the [GUIRunOnce] Commands settings.
- B. Create an Application profile that has a script application.
- C. Create an Application profile that has a virtual application.
- D. Create a Guest OS profile. Configure the Features settings.

**Answer: B**

Explanation:

Each deployment of a virtual machine for Customer1 must trigger the execution of a runbook by using the

Orchestrator web service. The runbook must execute before any user account logs on to the virtual machine.

We can create a "Post install" script in an application profile to trigger the runbook.

Answer A is incorrect because the [GUIRunOnce] Commands run when the first user logs in.

Reference:

[http://blogs.technet.com/b/neilp/archive/2013/11/14/scvmm\\_5f00\\_servietemplate\\_5f00\\_sorch.aspx](http://blogs.technet.com/b/neilp/archive/2013/11/14/scvmm_5f00_servietemplate_5f00_sorch.aspx)

NO.18 Your network contains a server named Server1 that has System Center 2012 Virtual Machine Manager installed. You

open the VMM Administrator Console as shown in the Administrator Console exhibit. (Click the Exhibit button.)

A user named User1 is a member of Role2 and Role3. User1 must create Guest OS Profile in a VMM library. User1

opens the VMM Administrator Console as shown in User1 Console exhibit (Click the Exhibit button.)

You need to

ensure that User1 can create Guest OS Profile in a VMM library. What should you do?

- A. Add User1 to the Administrator group Server1.
- B. Instruct User1 to use a Run as Account.
- C. Modify the Scope of Role3.
- D. Modify the Permitted actions of Role3.

**Answer: D**

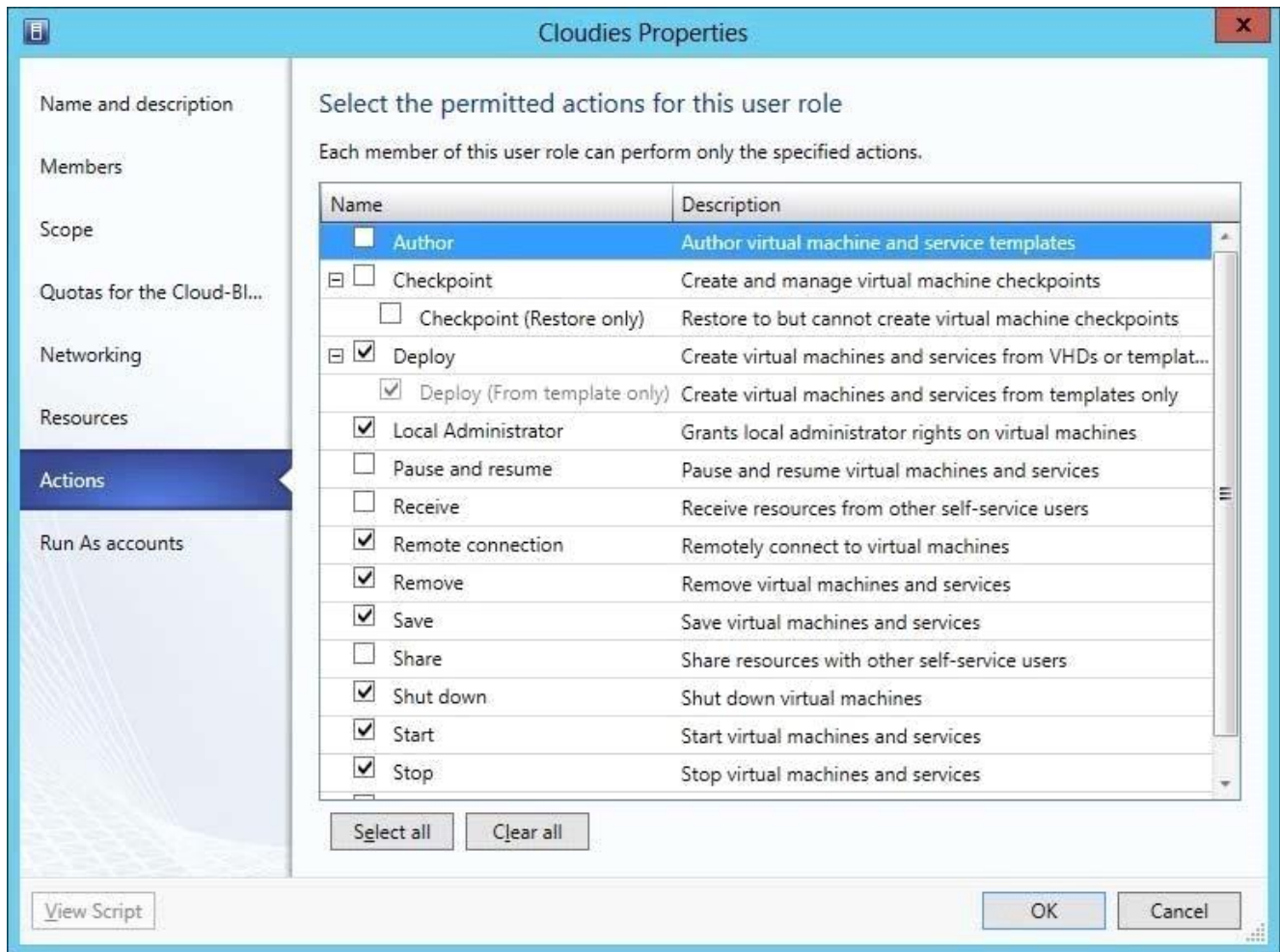
Explanation:

In VMM, self-service users can create their own templates and profiles. The Author action for a self-service user role

grants self-service users authoring rights. Users with authoring rights can create hardware profiles, guest operating

system profiles, application profiles, SQL Server profiles, virtual machine templates, and service templates.

<http://technet.microsoft.com/en-us/library/gg610573.aspx>



NO.19 Your network contains an Active Directory forest named contoso.com. The forest contains a System Center 2012 Operations Manager infrastructure. Your company, named Contoso Ltd., has a partner company named A, Datum Corporation. The A). Datum network contains an Active Directory forest named adatum.com. Adatum.com does not have any trusts. A firewall exists between the A). Datum network and the Contoso network. You configure conditional forwarding on all of the DNS servers to resolve names across the forests. You plan to configure Operations Manager to monitor client computers in both of the forests. You need to recommend changes to the infrastructure to monitor the client computers in both of the forests. What should you include in the recommendation? (Each correct answer presents part of the solution. Choose two.)

- A. Allow TCP port 5723 on the firewall.
- B. Deploy a gateway server to adatum.com.
- C. Create a DNS zone replica of adatum.com.
- D. Allow TCP port 5986 on the firewall.
- E. Create a DNS zone replica of contoso.com.
- F. Deploy a gateway server to contoso.com.

**Answer:** A, B

Explanation:

A: Gateway, System Center Management service, 5723/TCP

B: if there is a firewall between the agents and management servers, multiple authorized endpoints must be defined

and maintained in the firewall rules to allow communication between them.

To reduce this administrative overhead, Operations Manager has a server role called the gateway server. Gateway

servers are located within the trust boundary of the agents and can participate in the mandatory mutual

authentication. Because they lie within the same trust boundary as the agents, the Kerberos V5 protocol for Active

Directory is used between the agents and the gateway server. Each agent then communicates only with the gateway

servers that it is aware of. The gateway servers communicate with the management servers.

<http://technet.microsoft.com/en-us/library/hh212823.aspx>

<http://technet.microsoft.com/en-us/library/hh298610.aspx>

NO.20 You need to identify which server or servers can be deployed as a Hyper-V host by using System Center 2012 -Virtual Machine Manager (VMM).

Which server or servers should you identify? (Each correct answer presents part of the solution.

Choose all that

apply.)

A. Server1

B. Server2

C. Server3

D. Server4

**Answer:** A, C, D

Explanation:

\* To support discovery, the physical computer must have a baseboard management controller (BMC) installed that

enables out-of-band management.

From scenario:

Server name	Baseboard Management Controller (BMC)	Operating system
Server1	Installed	Windows Server 2012
Server2	Not installed	None
Server3	Installed	None
Server4	Installed	Windows Server 2008 R2